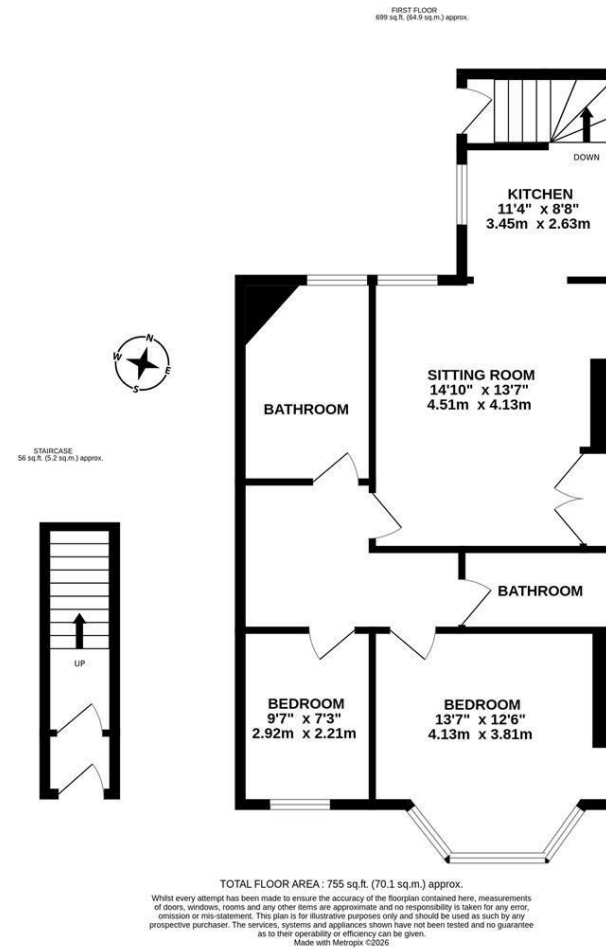




NO ONWARD CHAIN! This two bedroom upper floor flat is situated on King John Terrace, Heaton. King John Terrace, tucked just off Heaton Road and Second Avenue is ideally placed for access to the local amenities and cafe culture on both Heaton Road and Chillingham Road, a stones throw from Heaton Park and provides excellent access to Newcastle City centre, Jesmond and the nearby universities and hospitals.

The accommodation briefly comprises: entrance lobby through to hallway with stairs to first floor landing; sitting room with fitted alcove storage, open to kitchen with fitted units, work surfaces and stair access to the rear yard; bathroom complete with three piece suite and spot lighting; two bedrooms, bedroom one with walk in bay; second bathroom with three piece suite. Externally, a shared rear yard with wall boundaries, early viewings are essential.

Upper Floor 'Tyneside' Flat | 755 Sq ft (70.1m²) | Two Bedrooms | Sitting Room to Kitchen | Two Bathrooms | Shared Rear Yard | Great Location | No Onward Chain | Leasehold - 959 Years Remaining - Tyneside Lease with Peppercorn Rent | Council Tax Band A | EPC: D



Offers Over £170,000

IMPORTANT NOTE: These particulars and the descriptions and measurements herein do not constitute representation and whilst every effort has been made to ensure accuracy, this cannot be guaranteed.

